

Various field trips get planned for the summer months. When the field trip has been planned the details will be posted on this site. Additionally, the field trip details will be emailed to the lapidary club members directly.

You must have membership in the Edmonton Tumblewood Lapidary Club before you are permitted to go on the field trips. This is for Insurance purposes.

Rock Hunt at the Lafarge Gravel Pit: August 2017

The ETLC had a grand field trip to the Lafarge Gravel Pit. Initiated by Trena Sheppard and thanks to Ernie from Lafarge for getting the members through the safety orientation, and into a old reclaimed pit with plenty of fist sized rocks.

Members met at Timmys at 10:30 am August 13th and headed west to the gravel pit. Other members joined us there at noon for a brief safety orientation, and confirmation that we were all packing steel toed boots, hard hats, gloves, and Hi Visibility vests. Then a short drive to a worked out pit, where there were acres of gravel and fist sized rocks to check out. Members scattered to the far corners of the old pit, returning regularly to drop off treasures. It was noted that there seemed to be much more stuff closer to the cars and much more high grading the farther away from the cars.

As the afternoon progressed, more member joined us and some left for other commitments. In the end 14 members had a dig and found some stuff. As none of our members had specifically been in this pit, we were not sure what we would find. Trena had worked here in a past life, but as she admitted she just “picked up pretty rocks” and did not know what they were.

We were surprised that there was very little petrified wood and the “lumber” found was mostly carbonized and agatized. We were also surprised at the petrified coral, there was plenty about and it is not that common in the area. There were tons of jaspers and quartzite and lots of other interesting pieces. Bruce Smith won the nicest rock with a small carnelion, and Scott won the largest rock hauled out, a 50 plus pound display rock.

We had a community lunch break about 2 pm and enjoyed the farmers market snacks from Trena.

Some members left after lunch, and others arrived, having spotted the signs and following the directions provided to members.

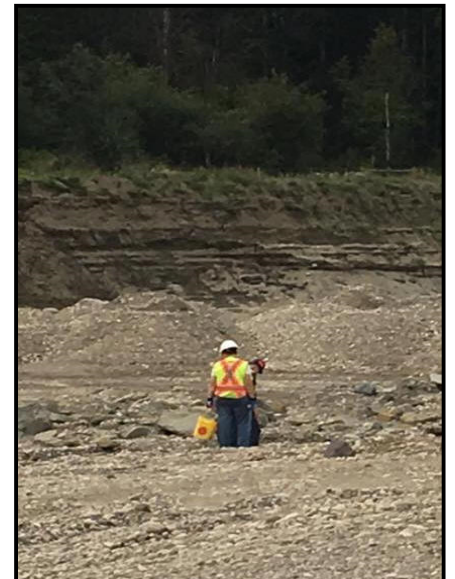
Where to begin hunting?



Did anyone bring a gold pan?



Digging for treasure!





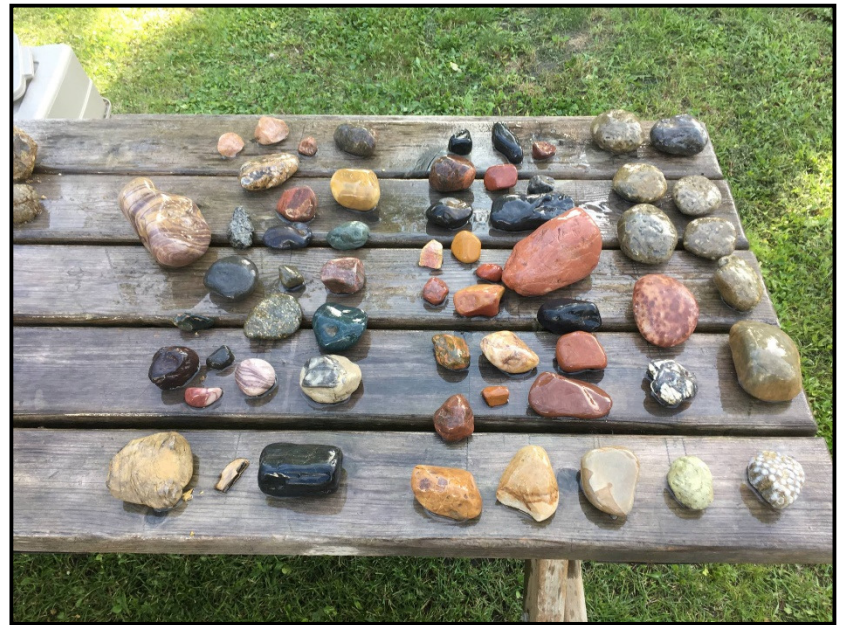
Bruce found a translucent

**Bruce found a nice
Carnelian Agate.
NICE COLOUR!**



**Enjoying fresh air and
good food!
Bags of Treasures!
A perfect day!**

**Trena surprised everyone
with a gourmet Farmer's
Market lunch! Thanks for the
treat!**



**A display of rocks found at the pit. Note the
petrified coral on the lower right corner.**

It should polish well!